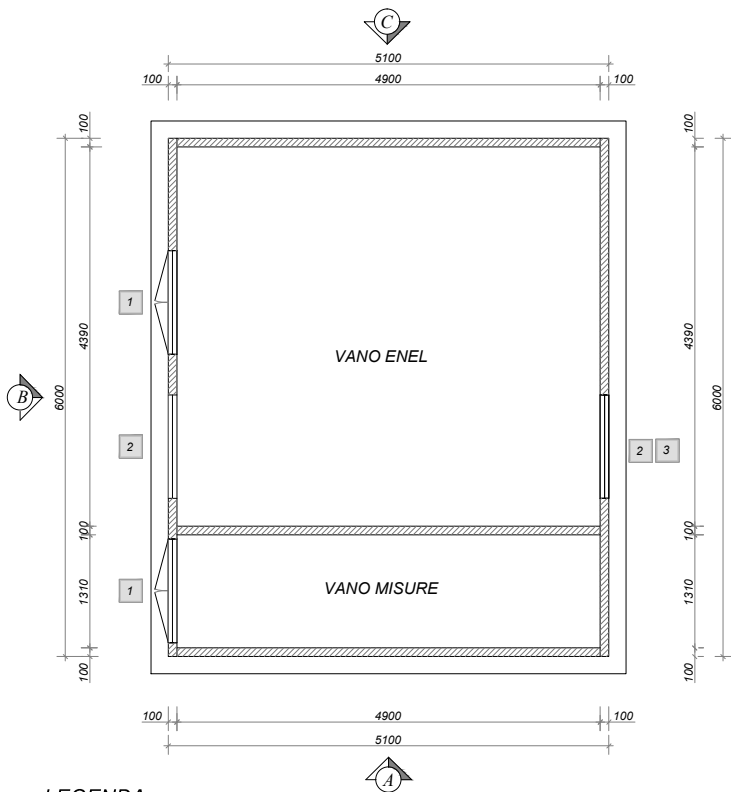


# cod.02/P

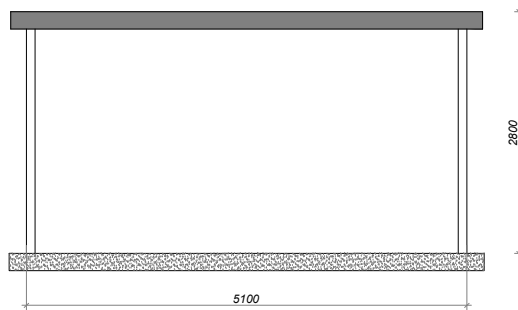
## Cabina a pannelli prefabbricati in cemento armato vibrato

## Dimensioni mm 5100x6000xh2800

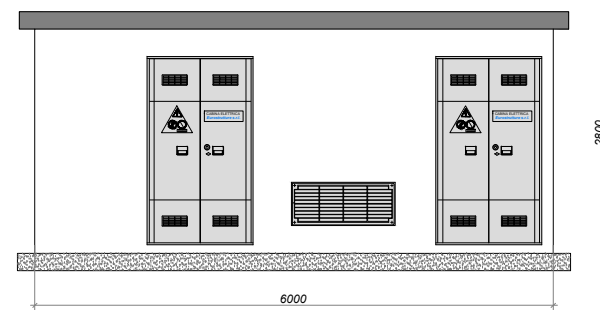
PIANTA CABINA A PANNELLI



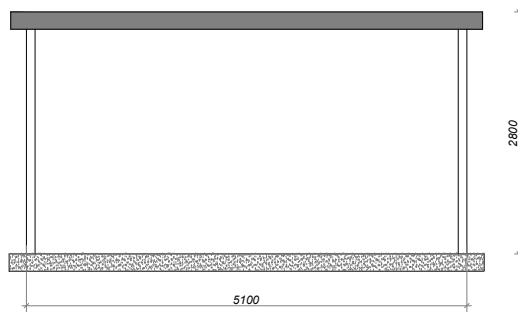
PROSPETTO A



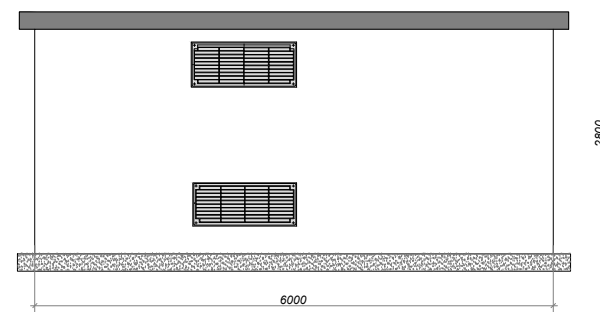
PROSPETTO B



PROSPETTO C



PROSPETTO D

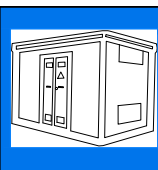


LEGENDA

- 1 PORTA A DUE ANTE IN VTR (utili mm 1115x2095)
- 2 GRIGLIA BASSA IN VTR (mm 1200x500)
- 3 GRIGLIA ALTA IN VTR (mm 1200x500)

**Eurostrutture S.r.l.**

Uffici e sede amministrativa  
 Corso Umberto I, 55 - 80138 NAPOLI  
 Tel. 081 5517055 - Fax 081 7648778  
 Stabilimento di produzione  
 S.S. n. 87 Km 20 + 600 - 81025 Marcianise (CE)



REDAZIONE GRAFICO  
 ARCH. R. MORIELLO  
 CONTROLLO GRAFICO  
 ING. E. D'ANDRIA

PROGETTISTA  
 ELETTRIODI ESAB OK 4339/3,2  
 RESIST. SFORMO 140 Kg/cm<sup>2</sup>  
 BOCCOLE  
 MA 08  16   
 MA 12  18   
 MA ...  30

DATA  
 20.04.2011  
 TOLLERANZE  
 Strutture Monodim. Solai e Pannelli  
 L = ± 25 mm. L = ± 20 mm.  
 s = ± 10 mm. s = ± 10 mm.

PROGETTO  
 PIANTA-PROSPETTI  
 REVISIONE N.  
 00

TAV. 1/1  
 PESO STRUTTURA Q.li  
 CLS. ACCIAIO  
 C 28/35 RETE ELETTR.

SCALA  
 -----  
 PEZZI  
 B 450 C  
 B 450 C

cod. 02/P